

PROTECT YOUR HEALTH RESIST CVE

WHAT IS CVE:

Cricket Valley Energy is one of the largest natural-gas power plants in the North East. It burns fracked natural gas (methane) piped in via the Iroquois pipeline to produce 1,100 megawatts of electric power. CVE pumps at least 6 million tons of greenhouse gasses and thousands of tons of other toxic pollutants into the air each year.

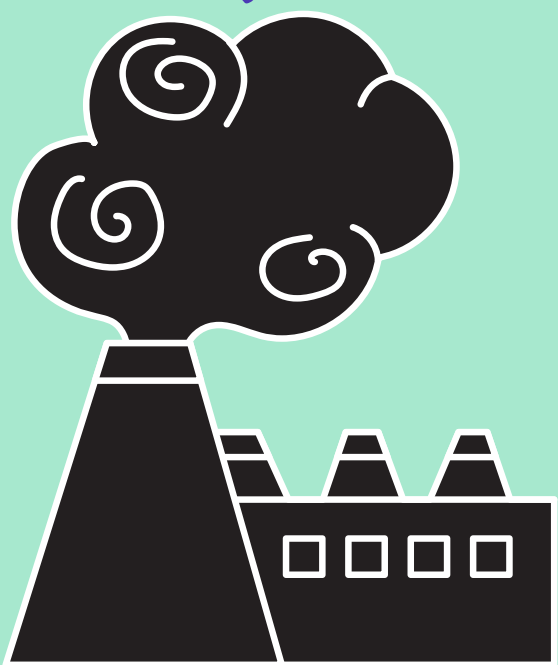


WHO IS IMPACTED:

“You! Residents of the Dover and Wingdale and Wassaic plus the local schools and farms and businesses have been living next to this toxic new neighbor throughout the pandemic.



AIR QUALITY TESTS:



We partnered with Southwest Pennsylvania Environmental Health Project to test the air quality in the area to learn the extent of the plant's emissions. Since the plant began operation in 2020, we monitored pollutants in the air from 4 local homes and found alarming results.

READ THE OTHER SIDE TO SEE THE RESULTS

For more detailed information, visit

www.StopCricketValley.org

Contact us at info@stopcricketvalley.org



WHAT'S IN OUR AIR:

The Air quality tests found two types of pollution:

- 1) **Particulate Matter, or PM_{2.5}**
 - Similar to soot or ash.
 - They are 2.5 microns, so small they are able to go past the filters in your body and reach your lungs

- 2) **Volatile Organic Compounds, or VOCs**
 - Chemicals found in paints and solvents.
 - VOCs are harmful to your health even if you're exposed for only a short period.

WHAT ARE THE HEALTH IMPACTS OF PM_{2.5}?

WHAT ARE THE HEALTH RISKS OF PARTICULATE MATTER?

Particulate matter poses a serious health risk because it can travel into the respiratory tract. PM_{2.5} is especially dangerous because it can penetrate deep into the lungs and sometimes even into the bloodstream.

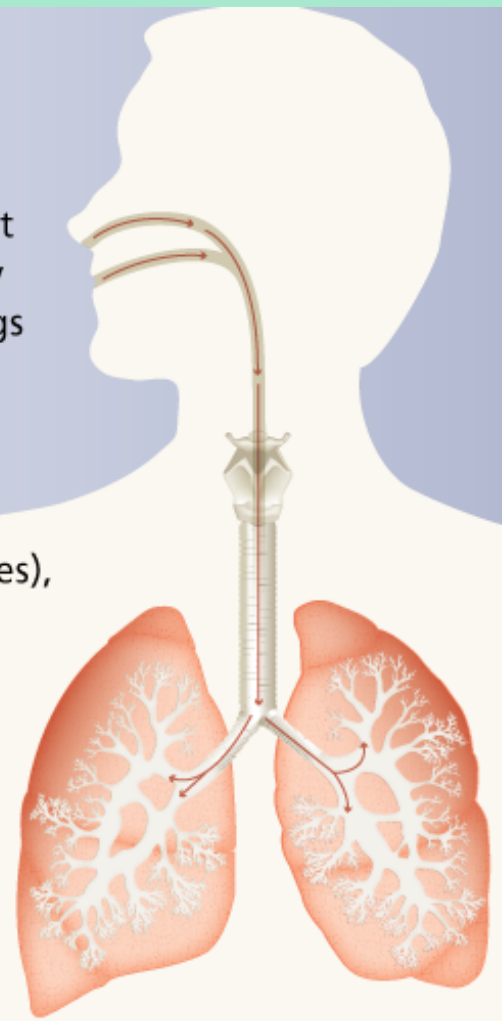
HEALTH EFFECTS

- » Decreased lung function
- » Chronic bronchitis
- » Increased respiratory symptoms
- » Cardiac arrhythmias (heartbeat irregularities),
- » Heart attacks
- » Premature death

GROUPS SENSITIVE TO PM_{2.5}

- » People with heart or lung disease
- » Older adults
- » Children
- » Pregnant women

Source: www.epa.gov



WHAT ARE THE HEALTH IMPACTS OF VOCs?

SHORT TERM EFFECTS

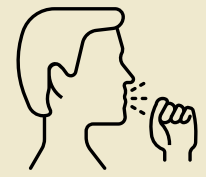


HEADACHES



NOSE, THROAT EYES INFLAMMATION

COUGHING, PAINFUL BREATHING



BRONCHITIS PNEUMONIA,



SKIN IRRITATION

LONG TERM EFFECTS

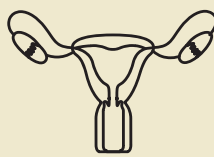
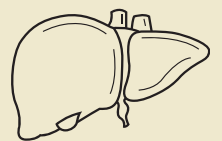
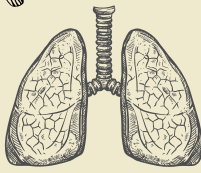
CARDIOVASCULAR DISEASES

AFFECTS CENTRAL NERVOUS SYSTEM

RESPIRATORY DISEASES ASTHMA, CANCER

IMPACTS ON LIVER, SPLEEN, BLOOD

IMPACTS ON REPRODUCTIVE SYSTEM



TAKE ACTION!

- Call Governor Cuomo @ 877-235-6537 and tell him to shut down Cricket Valley Power Plant!
- Sign the petition: Bit.ly/protectourhealthstopcve
- Sign up to take a health impact study to monitor the effects of CVE's air pollution and hold them accountable

Contact us at info@stopcricketvalley.org
#ResistCVE #StopCVE